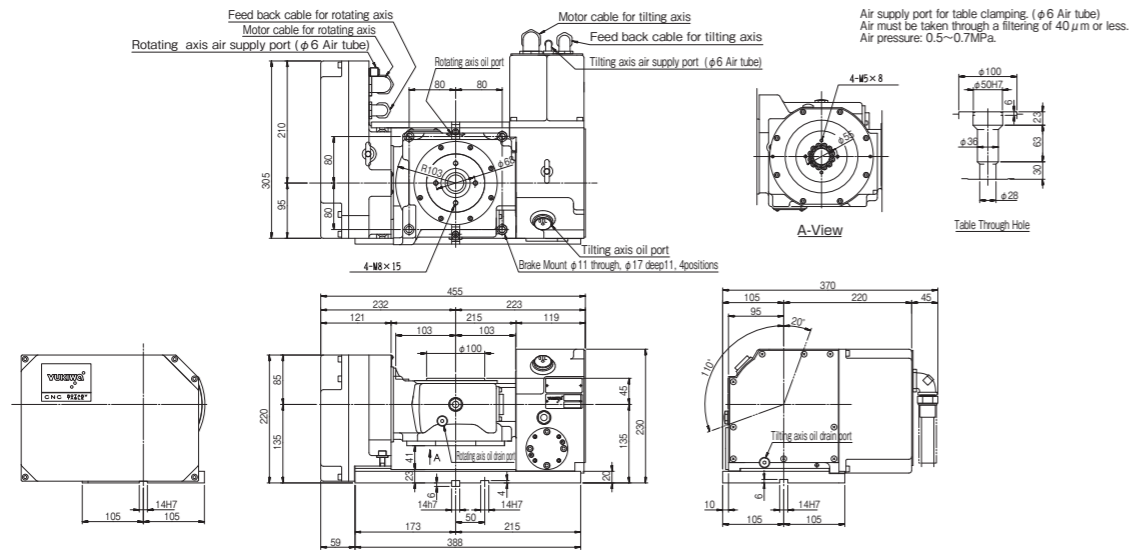
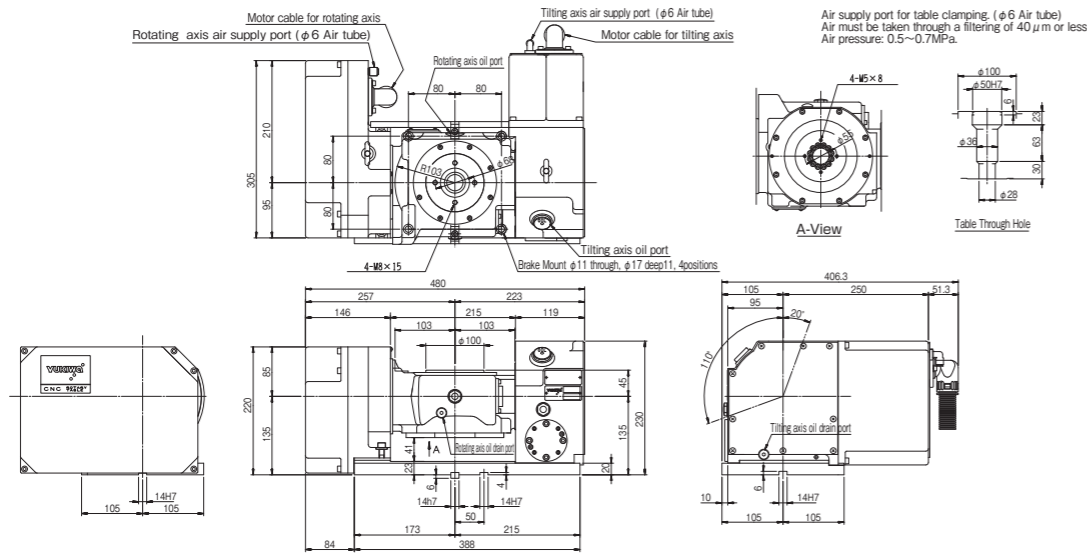


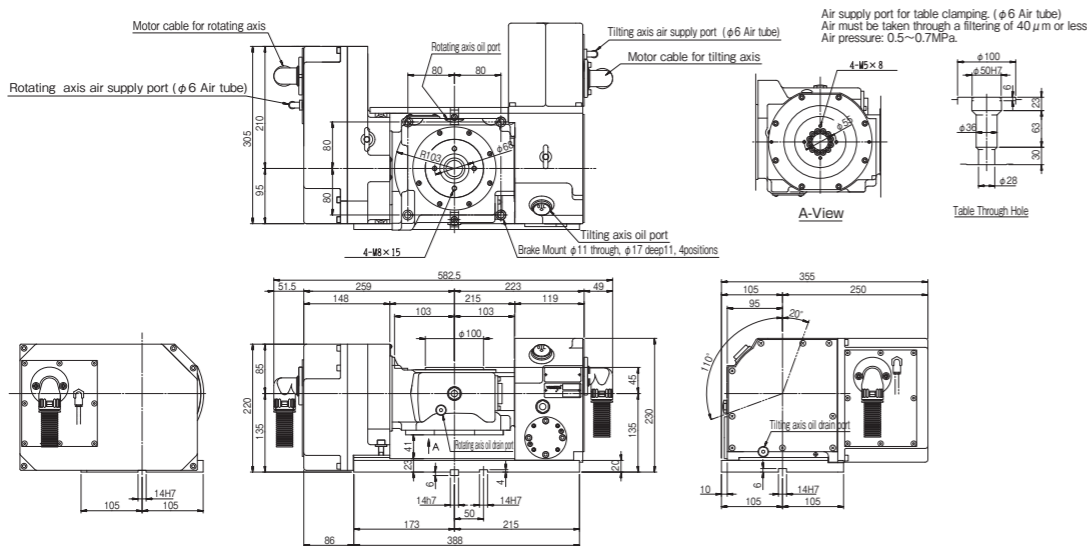
TNT100L-BTC3



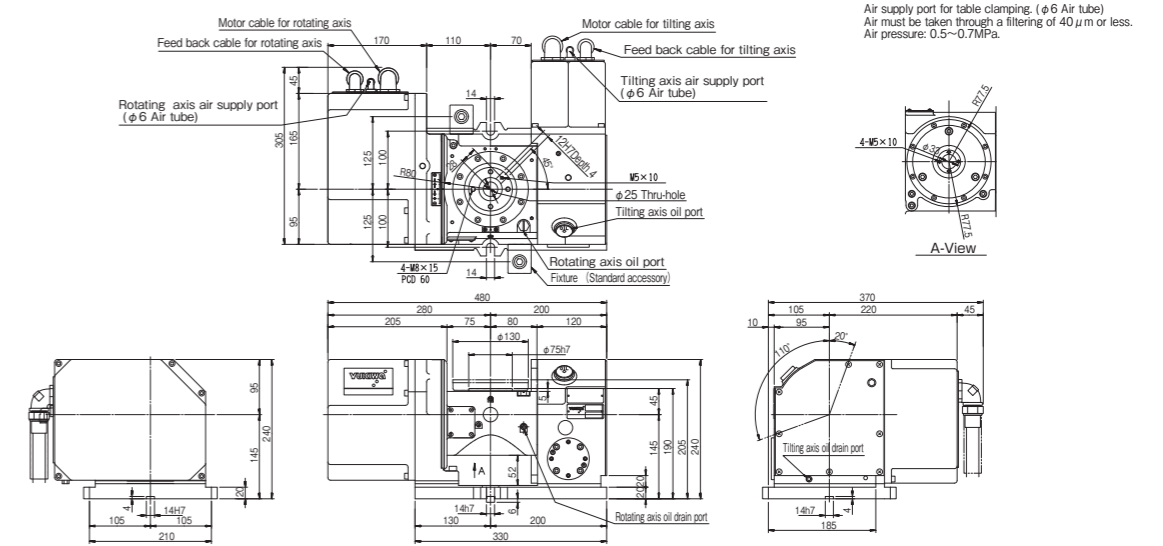
TNT100L-BTC6/BTC7/BTC8/BTC9/BTC1A



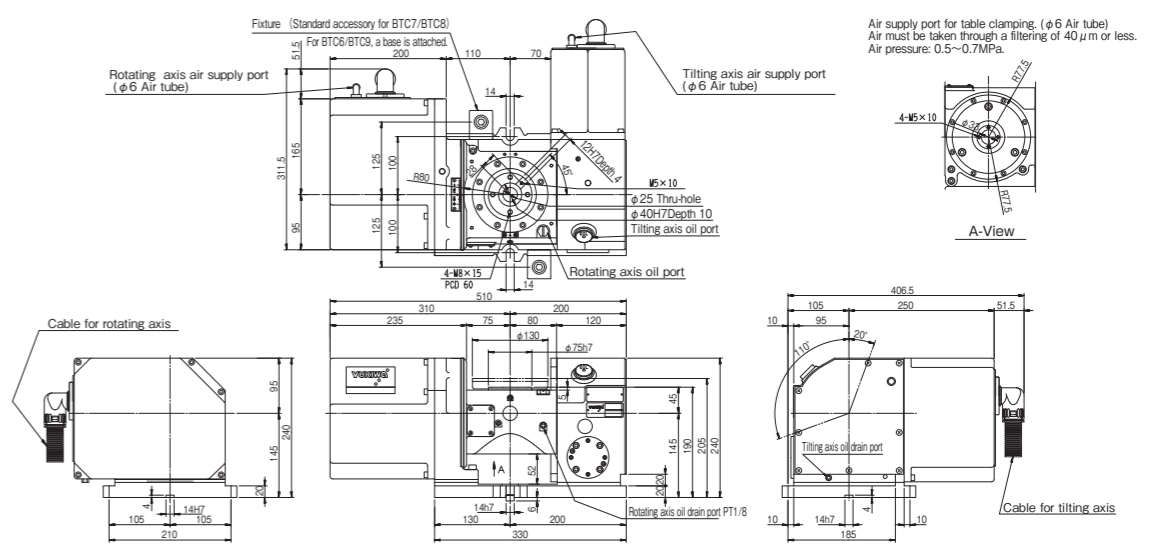
TNT100L-BQT6/BQT9



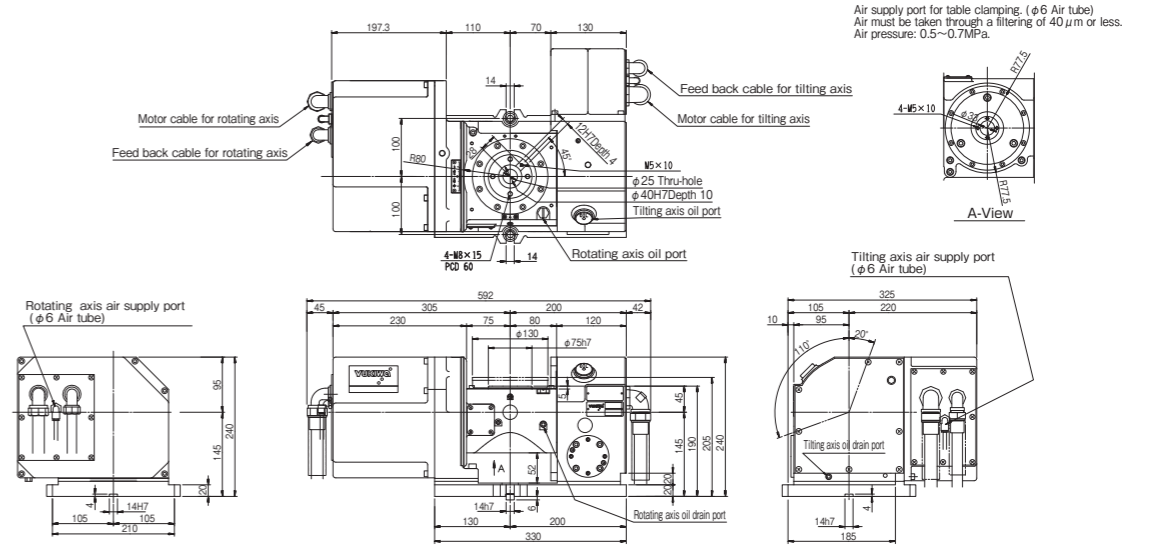
TNT130L-BTC3



TNT130L-BTC6/BTC7/BTC8/BTC9/BTC1A

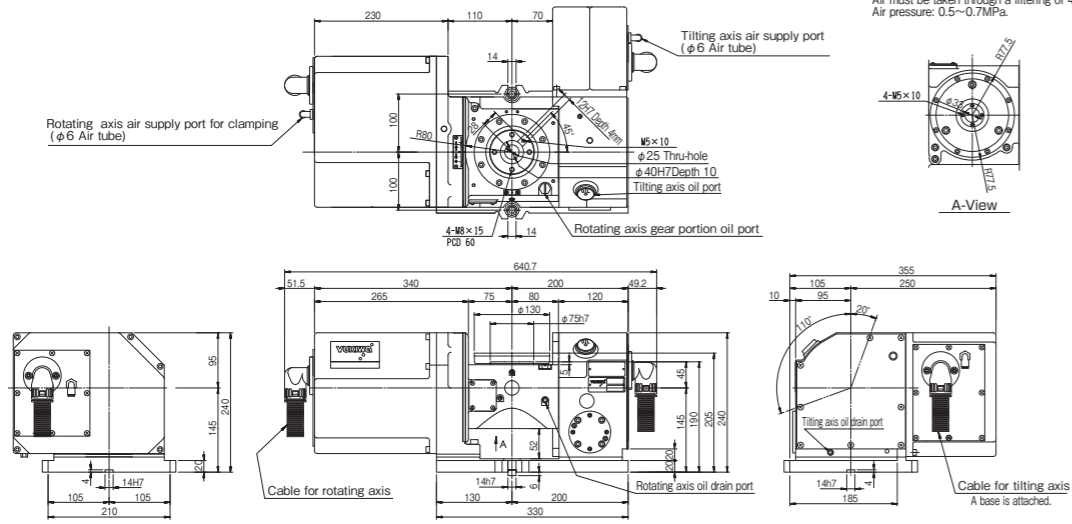


TNT130L-BQT4-1



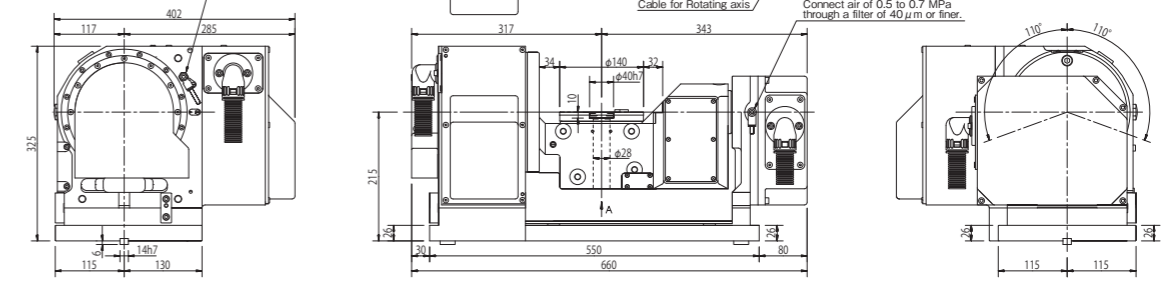
TNT130L-BQT6/BQT9/BQT1B

Air supply port for table clamping. (φ6 Air tube)
Air must be taken through a filtering of 40 μm or less.
Air pressure: 0.5~0.7MPa.



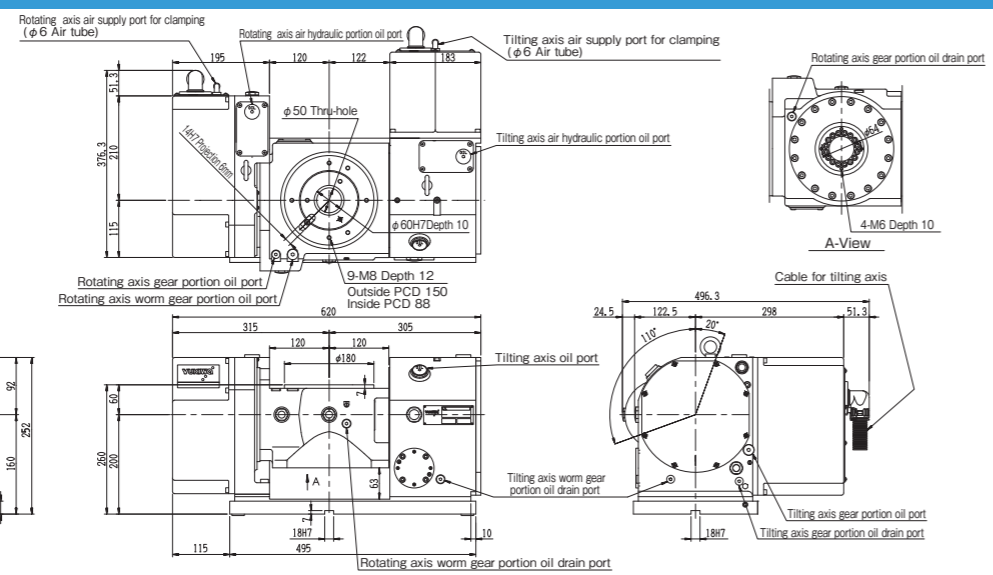
TRB(H)140L-BTC3/BTC6/BTC7/BTC9

Tilting axis air supply port
Air tube φ6
Connect air of 0.5 to 0.7 MPa
through a filter of 40 μm or finer.



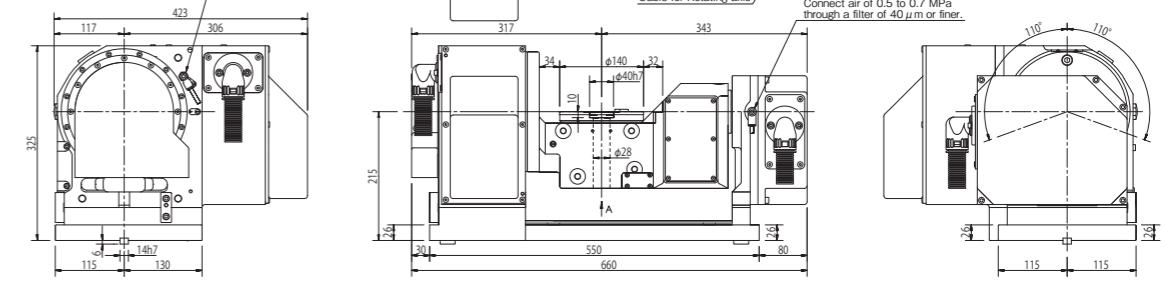
TNT180L-BTC36/BTC37/BTC39/BTC3A

Air supply port for table clamping. (φ6 Air tube)
Air must be taken through a filtering of 40 μm or less.
Air pressure: 0.5~0.7MPa.



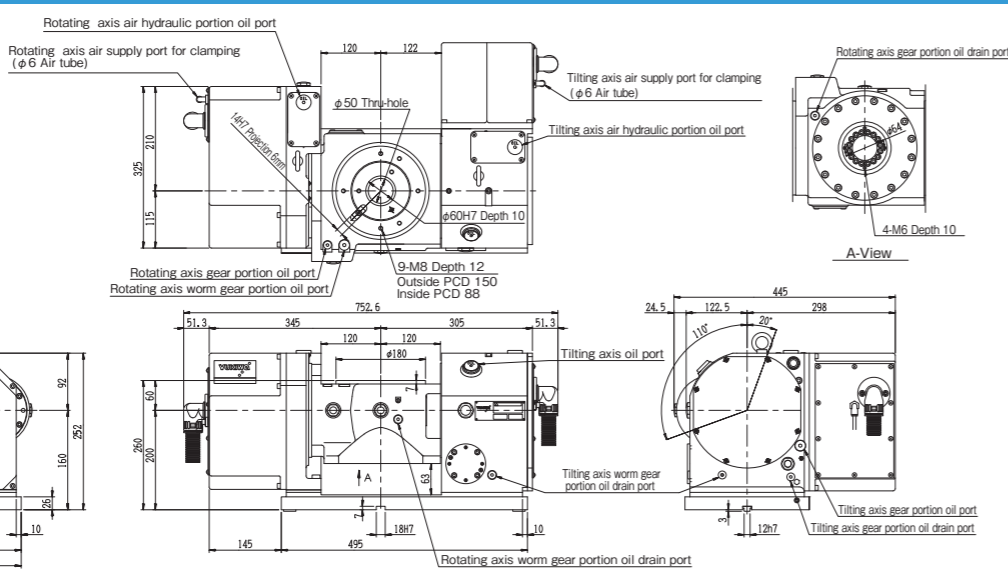
TRB(H)140L-BTC8/BTC1A

Tilting axis air supply port
Air tube φ6
Connect air of 0.5 to 0.7 MPa
through a filter of 40 μm or finer.



TNT180L-BQT36/BQT39

Air supply port for table clamping. (φ6 Air tube)
Air must be taken through a filtering of 40 μm or less.
Air pressure: 0.5~0.7MPa.



DRA170-BTC36/BTC37/BTC39/BQT36/BQT39

