

BT30 Tooling System

We offer ultimate Tooling Systems that meet user needs for high precision, high rigidity, high gripping force, high balancing precision, and safety.



BT30 Super G1 Chucks

■ Ultra High Precision

Guaranteeing the integrated runout accuracy of within 5 μ m. Highest precision in this industrial field.

■ Super Rigidity·Super Grip Force

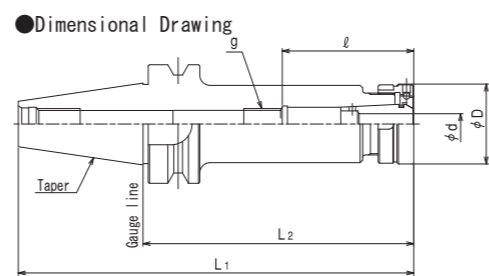
Most effectively usable for machining work by the end-mill.

■ Super Balancing

For high rotation machining, even the standard model can be used for rotation up to 25,000min⁻¹

■ Safety

Locknut and Safety Cover (PAT.) ensuring safety in high rotation machining.



Unit: mm

Model	Gripping Capacity d	Nut Outside Diameter D	Total Length L1	Length from the Gauge Line L2	Length Adjustment Screw g	Maximum ϕ	Taper	Applicable Collet (option)	Applicable Lock Nut	Applicable Spanner (option)	Length Adjustment Screw (option)	Coolant Seal Screw (option)	Weight (kg)
BT30-SGC6-45	1.0~6.0	20	93.4	45	M8X0.75	47	BT30 7/24	SG6	SGN6	FS20	APM6	CSH6	0.5
-SGC6-75			123.4	75		52							0.6
-SGC6-105			153.4	105		0.7							
BT30-SGC8-45	1.0~8.0	26	93.4	45	M10X1.5	46		SG8	SGN8	FS26	APM8-2	CSH8	0.5
-SGC8-75			123.4	75		0.6							
-SGC8-105			153.4	105		0.7							
BT30-SGC10-45	2.0~10.0	31	93.4	45	M12X1.5	51		SG10	SGN10	FS33	APM10-2	CSH10	0.5
-SGC10-75			123.4	75		0.6							
-SGC10-105			153.4	105		0.8							
BT30-SGC12-45	3.0~12.5	36	93.4	45	M14X1.5	38		SG12	SGN12	FS36	APM12-1	—	0.5
-SGC12-75			123.4	75		APM12-2					CSH12	0.7	
-SGC12-105			153.4	105		—					—	0.9	
BT30-SGC16-45	3.0~16.0	42	93.4	45	—	—	SG16	SGN16	FS42	—	—	0.5	
-SGC16-75			123.4	75	M18X1.5	CSH16				0.8			
-SGC16-105			153.4	105	—	—				0.7			
BT30-SGC20-60	3.0~20.0	50	108.4	60	—	—	SG20	SGN20	FS50	—	—	0.7	
-SGC20-90			138.4	90	M22X1.5	CSH20				1.0			

◆The above Max ϕ of tapered is the length when Length Adjustment Bolt (APM) is used.

◆Dimensions of tapered shank are in accordance with MAS4003-1982 BT Tapered Shank.

◆Collet, Spanner, Coolant-Sealing Back-up Screw, Length Adjustment Bolt and retention knob are not included in the above. They are separate accessories.

BT30 Hybrid G1 Chucks

■ Super High Accuracy

With the collet holder system, 3 μ m of integrated runout accuracy is guaranteed.

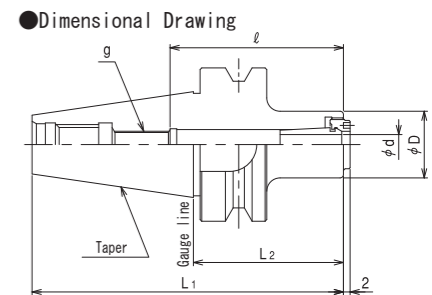
With the inside-lock nut mechanism, smaller runout accuracy is attained than that of shrink-fit holders.

■ High speed rotation

Simple straight shape Usable up to 30,000min⁻¹ (BT Shank)

■ Easy operation

Since heating device is not necessary, it takes very shorter time setting and removing tools than those for shrink-fit holders.



Unit: mm

Model	Collet Gripping Capacity d	Nut Outside Diameter D	Total Length L1	Length from the Gauge Line L2	Length Adjustment Screw g	Maximum ϕ	Taper	Applicable Collet (option)	Applicable Lock Nut	Applicable Spanner (option)	Length Adjustment Screw (option)	Coolant Seal Screw (option)	Weight (kg)
BT30-HGC6-45	1.0~6.0	20	93.4	45	M8X0.75	47	BT30 7/24	SG6	HGN6N	PS6N	APM6	CSH6	0.4
-HGC6-75			123.4	75		52							0.5
-HGC6-105			153.4	105		0.7							
BT30-HGC8-45	1.0~8.0	25	93.4	45	M10X1.5	46		SG8	HGN8N	PS8N	APM8-2	CSH8	0.5
-HGC8-75			123.4	75		0.6							
-HGC8-105			153.4	105		0.7							
BT30-HGC10-45	2.0~10.0	26	93.4	45	M12X1.5	51		SG10	HGN10N	PS10N	APM10-2	CSH10	0.4
-HGC10-75			123.4	75		0.5							
-HGC10-105			153.4	105		0.6							

◆The above Max ϕ of tapered is the length when Length Adjustment Bolt (APM) is used.

◆Dimensions of tapered shank are in accordance with MAS4003-1982 BT Tapered Shank.

◆Collet, Spanner, Coolant-Sealing Back-up Screw, Length Adjustment Bolt and retention knob are not included in the above. They are separate accessories.

SG Collets



Model	Bore Size	Outside Diameter	Length	Applicable Main Body
SG6-	1.0, 1.5, 2.0, 2.5, 3.0, 3.175, 4.0, 5.0, 5.5, 6.0	10.15	18.5	SGC6
SG8-	1.0, 1.5, 2.0, 2.5, 3.0, 3.175, 4.0, 5.0, 5.5, 6.0, 6.2, 7.0, 8.0	12.8	23.5	SGC8
SG10-	2.0, 2.5, 3.0, 3.175, 4.0, 5.0, 5.5, 6.0, 6.2, 7.0, 8.0, 8.5, 9.0, 10.0	15.3	28.0	SGC10
SG12-	3.0, 3.175, 4.0, 5.0, 5.5, 6.0, 6.2, 7.0, 8.0, 8.5, 9.0, 10.0, 10.5, 11.0, 12.0, 12.5	17.9	32.5	SGC12
SG16-	3.0, 4.0, 6.0, 8.0, 10.0, 12.0, 16.0	22.8	37.0	SGC16
SG20-	3.0, 4.0, 6.0, 8.0, 10.0, 12.0, 16.0, 20.0	27.6	41.0	SGC20

※In addition to the standard collets, special sizes are also available.

※Collet Range: Up to -0.1mm of the collet capacity.

SG Collets



Model	Bore Size	Outside Diameter	Length	Applicable Main Body
SG6-	1.0, 1.5, 2.0, 2.5, 3.0, 3.175, 4.0, 5.0, 5.5, 6.0	10.15	18.5	HGC6
SG8-	1.0, 1.5, 2.0, 2.5, 3.0, 3.175, 4.0, 5.0, 5.5, 6.0, 6.2, 7.0, 8.0	12.8	23.5	HGC8
SG10-	2.0, 2.5, 3.0, 3.175, 4.0, 5.0, 5.5, 6.0, 6.2, 7.0, 8.0, 8.5, 9.0, 10.0	15.3	28.0	HGC10

※In addition to the standard collets, special sizes are also available.

※Collet Range: Up to -0.1mm of the collet capacity.

SGN Lock Nut



Model	Applicable Main Body	Applicable Collet	Applicable Hook Spanner
SGN6	SGC6	SG6	FS20
SGN8	SGC8	SG8	FS26
SGN10	SGC10	SG10	FS33
SGN12	SGC12	SG12	FS36
SGN16	SGC16	SG16	FS42
SGN20	SGC20	SG20	FS50

Hook Spanners



Model	Applicable Main Body	Applicable Lock Nut
FS20	SGC6	SGN6
FS26	SGC8	SGN8
FS33	SGC10	SGN10
FS36	SGC12	SGN12
FS42	SGC16	SGN16
FS50	SGC20	SGN20

※Hook spanners are separate accessories.

Spanners with Torque Limiters

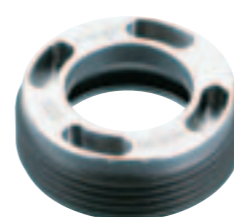


Model	Set Torque (Nm)	Applicable Main Body	Applicable Lock Nut
FS20T-SG	8	SGC6	SGN6
FS26T-SG	20	SGC8	SGN8
FS33T-SG	22	SGC10	SGN10
FS36T-SG	35	SGC12	SGN12

※Torque-fixed type with recommendable torque.

※Hook spanners are separate accessories.

HGN Lock Nuts



Model	Applicable Main Body	Applicable Collet	Applicable Pin Spanner
HGN6N	HGC6	SG6	PS6N
HGN8N	HGC8	SG8	PS8N
HGN10N	HGC10	SG10	PS10N

Pin Spanners



Model	Applicable Main Body	Applicable Lock Nut
PS6N	HGC6	HGN6N
PS8N	HGC8	HGN8N
PS10N	HGC10	HGN10N

※Hook spanners are separate accessories.