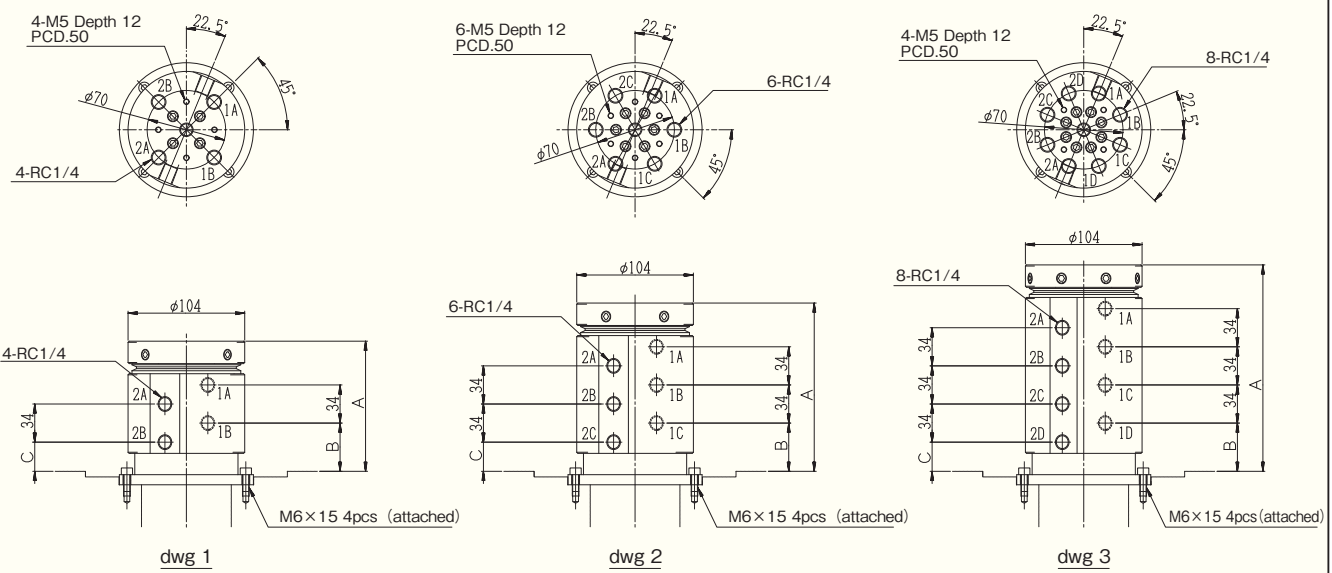
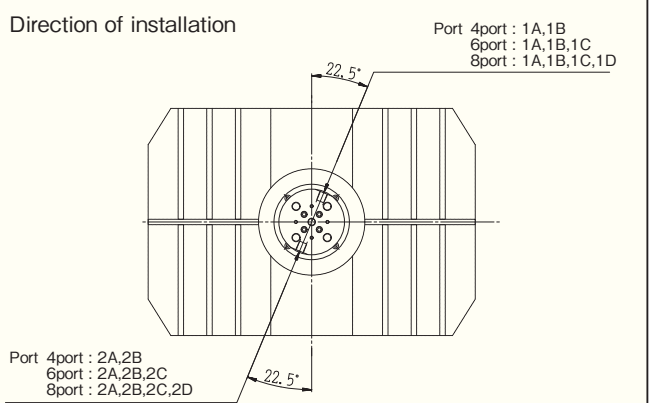


BQT Rotary Joint for Quick Table

- TC-31AN
- TC-31B
- TC-32A
- TC-R2A
- TC-32B QT
- TC-32BN QT
- TC-R2B

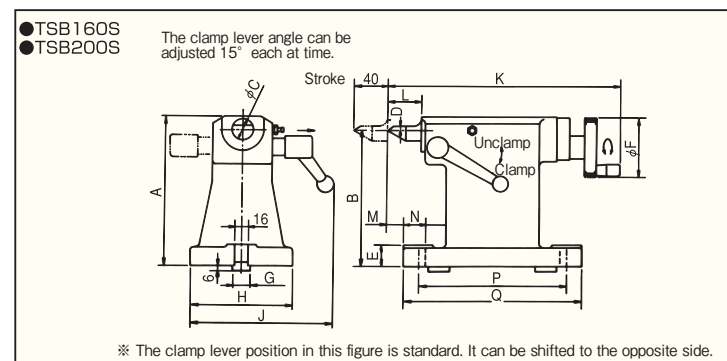
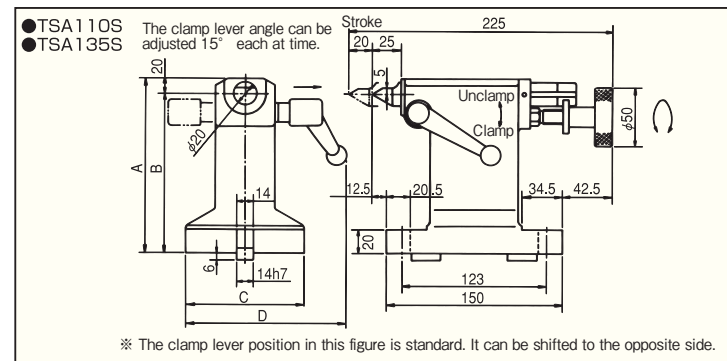


model	Max.pressure 3.5MPa			Max.pressure 7.0MPa		
	QJ4L	QJ6L	QJ8L	QJ4H	QJ6H	QJ8H
Number of port	4port	6port	8port			
Drawing	1	2	3			
Brother Industries, Ltd. Model No. of tapping center	TC-31AN	A	116.0	150.0	184.0	
	TC-31B	B		43.0		
	TC-32BQT	C		26.0		
	TC-32BNQT	C		26.0		
	TC-32A	A	119.6	153.6	187.6	
	TC-R2A	B		46.6		
	TC-R2A	C		29.6		
	TC-R2B	A	118.5	152.5	186.5	
	TC-R2B	B		45.5		
	TC-R2B	C		28.5		



Manual Tailstocks

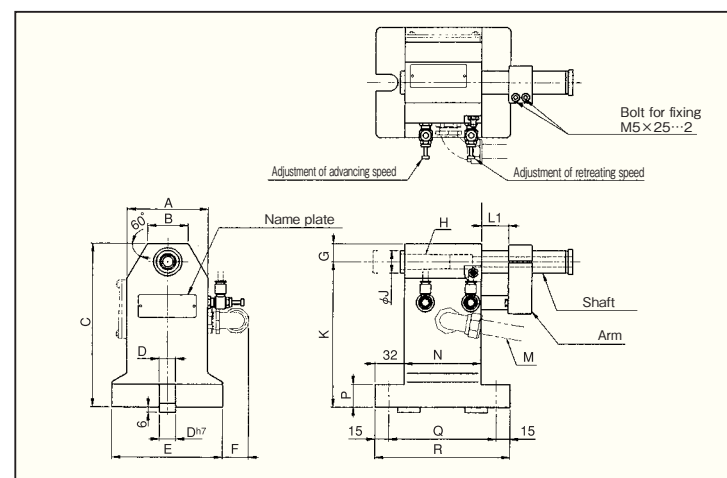
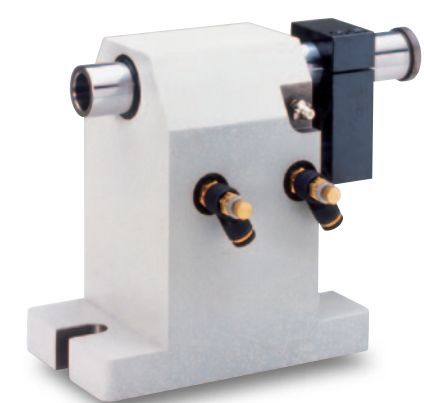
The Manual Tailstock is used to support a 60° center hole at the end of workpieces. We also offer a manual tailstock whose shaft end is Morse taper No. 2.



Model	Suitable to	A	B	C	D	E	F	G	H	J	K	L	M	N	P	Q	Weight (kg)
TSA110S	JNC (H) 140	130	110	90	133	—	—	—	—	—	—	—	—	—	—	—	4.5
TSA135S	JNC (H) 170, YNC (P) 170	155	135	100	138	—	—	—	—	—	—	—	—	—	—	—	5.4
TSB160S	JNC (H) 200, YNC (P) 200	176	160	25	5	25	70	18h7	120	167	275	40	20	26	174	210	11.0
TSB200S	JNC (H) 250, YNC (P) 250	227	200	38	7	35	98	18h7	140	198	395	50	40	25	228	260	25.0

※Be careful in Center Height (B) for BQT model with the base.

Pneumatic Tailstocks



Model	Suitable to	K	D	L1	Shaft Thrust force S (N) *	Confirmation switch, cable	A	B	C	E	F	G	H	J	N	P	Q	R	Weight (kg)	
TPA110	JNC (H) 140	110	14	40	520	Not equipped	88	44	130	88	—	20	MT2	25	85	20	119	149	—	5.9
TPA135	JNC (H) 170, YNC (P) 170	135							155											7.0
TPA160	JNC (H) 200, YNC (P) 200	160	180	8.8																
TPA200	JNC (H) 250, YNC (P) 250	200	225	12.4																
TPB110	JNC (H) 140	110	14	30	520	Forward-Reverse movement confirmation switch and 4.5M cable are provided.	88	44	130	88	44.5	20	MT2	25	85	20	119	149	—	8.4
TPB135	JNC (H) 170, YNC (P) 170	135							155											9.5
TPB160	JNC (H) 200, YNC (P) 200	160	180	11.2																
TPB200	JNC (H) 250, YNC (P) 250	200	225	14.9																

※Customers must provide a live center because it is not included. * This thrust is applied at an air pressure of 0.5 MPa.
 ※Shaft clamp mechanism is not included.
 ※The standard specifications do not include valves, air tubes, or couplings. Provide them separately.
 ※The TPB type includes a cable, a cover, and a check switch section.
 ※When the T-slot width of the other machine is different from the guide piece width shown in the above table, a stepped guide piece can be used.
 ※Be careful in Center Height (K) for BQT model with the base.

Combination of special accessories with rotary tables

Table Type	Table Model No	Center Height (mm)	Model No. of Special Accessories			
			Manual Tailstocks	Pneumatic Tailstocks	Side Spindle	Side Table
CNC Rotary Tables	JNC(H) 140	110	TSA110S, TSB110S	TPA110, TPB110	SS110	
	JNC(H) 170, YNC(P) 170	135	TSA135S, TSB135S	TPA135, TPB135	SS135	ST135
	JNC(H) 200, YNC(P) 200	160	TSB160S	TPA160, TPB160	SS160	ST160
	JNC(H) 250, YNC(P) 250	200	TSB200S	TPA200, TPB200	SS200	ST200