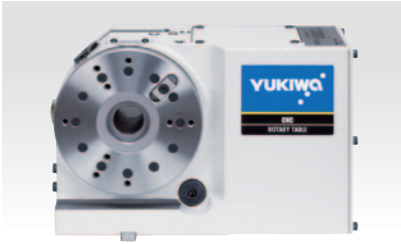


# Features of CNC Rotary Tables

YUKIWA SEIKO CNC Rotary Tables and Tilting Rotary Tables are compact, and have a number of features including a patented waterproof mechanism (auto-purge), low driving noise, and easy maintenance, which have earned a distinguished reputation from our customers.

## CNC Rotary Tables



**Low-cost, high-performance models!**  
Best-selling models for small MCs have been upgraded.

**JNC series** JNC140·170·200·250

- The compact size and light-weight secures a wider working space, being now a standard table for the machining center.
- Standard equipped auto air purging system(PAT.) for a superior water protection.



**High-speed indexing models of JNC series!**  
Productivity is improved by high-speed indexing.

**JNCH series** JNCH140·170·200·250

- High-speed rotary tables to shorten cycle time.



**High-grade, high-performance models!**  
The functions of high-class models are packed in its compact body.

**YNC series** YNC170·200·250

- Highest rigidity in this class, with large-size bearing support.
- Highest clamping torque in this class, with powerful clamp system.
- Standard equipped auto air purging system(PAT.) for a superior water protection.

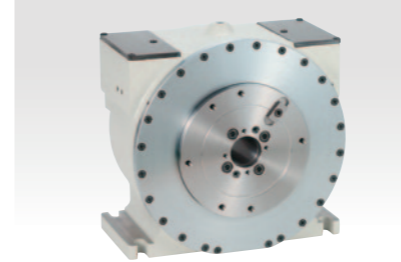


**Higher clamping torque models of YNC series!**  
Higher rigidity than YNC series.

**YNCP series** YNCP170·200·250

- Highest clamping torque in this class, with built-in air-hydraulic unit. 1,050N·m for YNCP250 (about 1.4 times higher than YNC250).

## Direct Drive CNC Rotary Tables

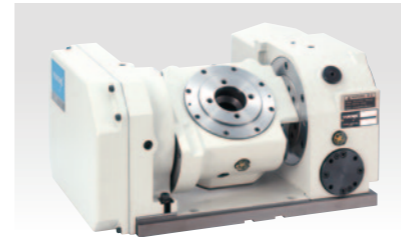


**High-speed Rotation and Powerful Clamping Model !**  
Realizing High-speed Rotation with Direct Drive Motor

**DRA series** DRA170

- No Backlash for direct connecting to high-resolution encoder. No gear, no need for lubrication, and wearing. Positioning precisely in the transition of normal/reverse rotation.
- Strong clamping force of 20 times of the motor torque prevents vibrations during the cutting operations.
- Auto-Purge system hermetically sealed structure included as standard. This system will increase the protection against volume of coolant.

## CNC Tilting Rotary Tables



**New type of compact tilting tables!**  
Compact design for installation in small machine tools

**TNT series** TNT100·130·180

- The compact body, most suitably applicable for small-sized machining center.
- The tilting movement does not move the motor cover nor the cable, enabling easier designing of the jigs.
- Standard equipped auto air-purging system(PAT.), protecting water penetration.



**Standard of compact tilting tables!**  
Large tilting angle for automated lines

**TRB/TRBH series** TRB(H)140

- Inclination of the tilting axis to  $\pm 110^\circ$  enables widening range of machining.
- Surface of the rotating tables matches in height to the center of the tilting axis, making the work programming easier.
- Auto air-purging(PAT.), available as special accessory, will enhance water protection.

## Specifications of CNC Rotary Tables

Model	JNC140L JNCH140L	JNC170L JNCH170L	JNC200L JNCH200L	JNC250L JNCH250L	YNC170L YNCP170L	YNC200L YNCP200L	YNC250L YNCP250L	
Table Diameter (mm)	140	170	200	250	170	200	250	
Center Height (mm)	110	135	160	200	135	160	200	
Table Through Hole Dia. (mm)	28	45	56	72	45	56	72	
Clamp System	Pneumatic pressure (0.5 to 0.7 MPa)				Pneumatic pressure 0.5 to 0.7MPa (Pneumatic pressure 0.3 to 0.5MPa)			
Clamp Torque (N·m) (at 0.5 MPa)	120	230	450	650	260 (550)	540 (850)	840 (1,050)	
Indexing Accuracy (cumulative)	40 seconds or less			30 seconds or less	30 seconds or less	25 seconds or less	20 seconds or less	
Allowable Inertia Moment (kg·m <sup>2</sup> )	Vertical Use	0.25 (0.125)	0.5 (0.25)	1.0 (0.5)	2.0 (1.0)	0.5	1.0	2.0
	Horizontal Use	0.125 (0.06)	0.25 (0.125)	0.5 (0.25)	1.0 (0.5)	0.25	0.5	1.0
Total Reduction Ratio	1/72 (1/36)	1/90 (1/45)	1/90 (1/45)	1/90 (1/45)	1/90	1/90	1/90	
Maximum Rotating Speed (min <sup>-1</sup> )	41.6 (83.3)	33.3 (66.6)	33.3 (66.6)	33.3 (66.6)	33.3	33.3	33.3	
Product Weight (kg)	27	38	58	86	43	69	114	

( ): values of JNCH series. ( ): values of YNCP series.

## Specifications of Direct Drive CNC Rotary Table

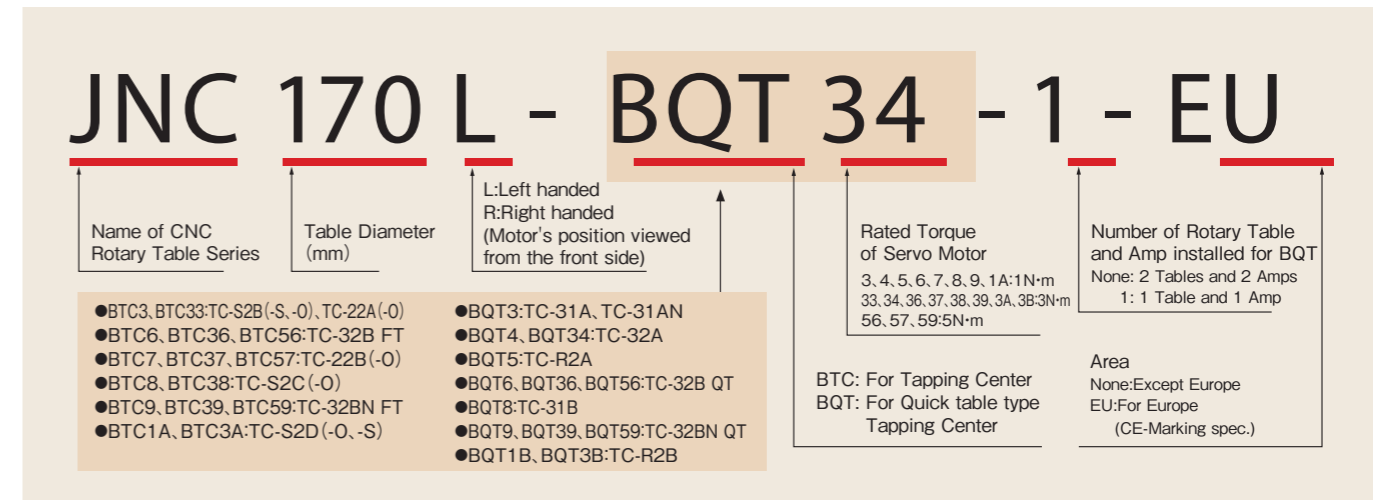
Model	DRA170				Model	DRA170				
Table Diameter (mm)	170				Allowable Load	Vertical Load(N)	2,000			
Center Height (mm)	135					Horizontal Load(N·m)	255			
Table Through Hole Dia. (mm)	Concentric locating hole dia. 40 H7 depth 10; Thru-hole dia. 40					Circumferential Load(N·m)	157			
Maximum Rotating Speed (min <sup>-1</sup> )	200				Allowable Inertia Moment (kg·m <sup>2</sup> )	0.22				
Clamp System	Pneumatic pressure(0.3 to 1MPa)				Allowable Rotating Torque(N·m)	9				
Supply Pressure(MPa)	0	0.3	0.5	1	Product Weight (kg)	69				
Clamp Torque (N·m)	30	200	320	480	Indexing Time	Rotation Angle(degree)	45°	90°	180°	360°
Indexing Accuracy (cumulative)	30					Indexing Time(second)	0.44	0.52	0.62	0.78

## Specifications of CNC Tilting Rotary Tables

Model	TNT100L		TNT130L		TNT180L		TRB(H)140L		
	Rotating Axis	Tilting Axis	Rotating Axis	Tilting Axis	Rotating Axis	Tilting Axis	Rotating Axis TRB	Tilting Axis TRBH	Tilting Axis
Table Diameter (mm)	100	—	75	—	180	—	140	—	—
Center Height (mm)	135	—	145	—	200	—	215	—	—
Table Through Hole Dia. (mm)	28	—	25	—	50	—	28	—	—
Clamp System	Pneumatic pressure (0.5 to 0.7 MPa)								
Clamp Torque (N·m)	200	320	120	270	500	900	120	450	—
Indexing Accuracy (cumulative)	35 seconds or less	40 seconds or less	30 seconds or less	40 seconds or less	30 seconds or less	45 seconds or less	40 seconds or less	60 seconds or less	90 seconds or less
Total Reduction Ratio	1/72	1/120	1/72	1/120	1/72	1/120	1/72	1/36	1/90
Maximum Rotating Speed (min <sup>-1</sup> )	41.6	25.0	41.6	25.0	41.6	25.0	41.6	83.3	33.3
Product Weight (kg)	80		72		185		129		

## Explanation on Model Number

The model number indicates not only the table specifications but also the other pertaining specifications, such as, the terminal box, the amplifier, and the cables.



### [View of Layout for Mounting]

